

# BRIDGEPORT STATE PARK

## Chief Joseph Dam, Washington



*Sun Shelter and Play Area*



*Group Camp Fire Circle*

Bridgeport State Park, located on the Columbia River at Chief Joseph Dam, was an existing development composed of a boat launch, campground, temporary administration area, and day-use and group-use areas. The park was created subsequent to the Chief Joseph Dam construction and was built by the U.S. Army Corps of Engineers. The park is maintained and operated by Washington State Parks.

Osborn Pacific Group Inc. was retained by the U.S. Army Corps of Engineers to provide design services and prepared construction documents for a \$1.4 million park expansion project. Features included: upgrading and expanding recreation vehicle campground area, day-use picnic area and swim beach development; group camp area development; pedestrian and handicapped access trails; ranger residence; maintenance building; restrooms and shelters; roads; water, sanitary, and electrical

systems; landscaping; and sprinkler irrigation. Osborn Pacific Group provided complete design services followed by completion of bid documents for the park and recreation amenity features, buildings, landscape architecture, and sprinkler irrigation. Subconsultants provided civil, structural, mechanical, and electrical engineering.

**Project:**  
*Bridgeport State Park*

**Client:**  
*US Army Corps of Engineers, Seattle District*

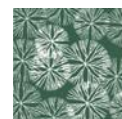
**Location:**  
*Chief Joseph Dam, Columbia River, Washington*



*Picnic Shelter*

**Site:**  
*Approximately 400 acres of rolling arid topography on shore of Rufus Woods Lake. Approximately 30 acres is developed.*

**Services:**  
*Final design, construction documents, and cost estimate of park and recreation amenity features, buildings, landscape architecture, and sprinkler irrigation. Contract administration and coordination for civil, structural, mechanical, and electrical engineering.*



OSBORN PACIFIC GROUP INC.

Landscape Architecture  
Recreation Planning  
Environmental Compliance